

Date	27.07.2018	Minutes writer:	M.Botteon
Attention to:			

Rear wheel assembly and disassembly tips

EBM system has a rear motor hub and you need to pay attention when you need to assemble/disassemble the rear wheel. Rear hub is locked on the frame with a special M12x1 mm nut and special washers, one 1.5mm thick on the right side and one 3.5mm thick on the left side.

The bike has been shipped with Most Silos tool case. Inside you will find:

- Air tube
- Tire levers
- 4 mm allen key for seatclamp
- 8 mm allen key for rear wheel assembly/disassembly

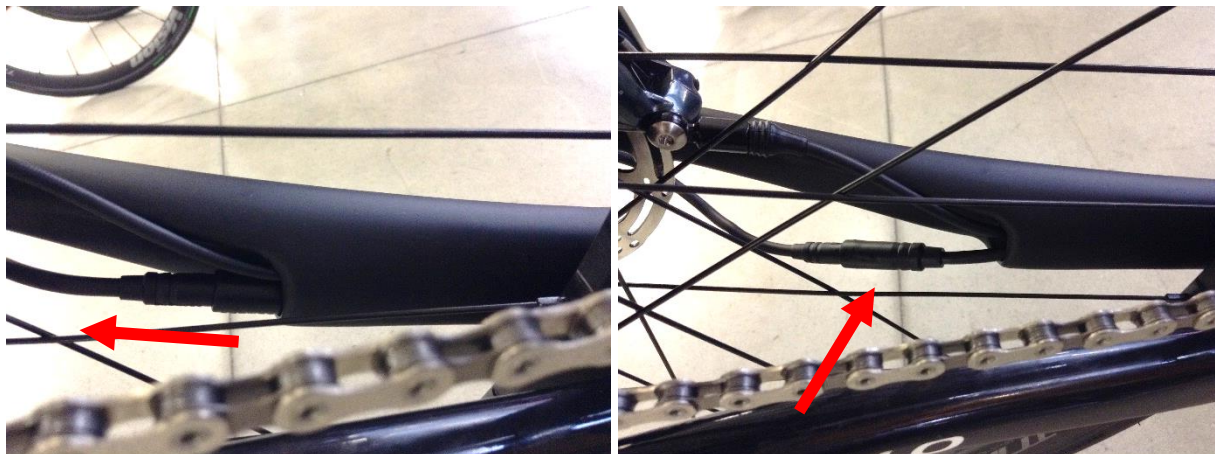


Wheel disassembly

- Remove the plastic clip which keep the cable in position



- Pull gently out the connector from the left chainstay



- Unplug it



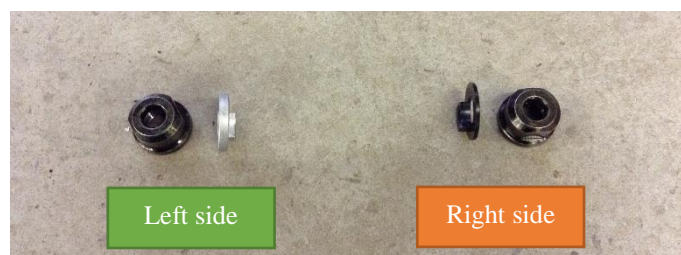
- Unscrew wheel nuts with provided 8 mm allen key
- Remove the wheel

Wheel assembly

To assemble the wheel on the frame you need to repeat the points above in the opposite way.

Please take care of the following aspects:

- The grey spacer, 3.5 mm thick must be assembled on the left side of the hub. The black spacer, 1.5 mm thick, must be assembled on the right side of the hub.



- Align the wheel properly:
 - o Align the flats of the hub to the dropouts

- The electric cable must be oriented towards the ground.

